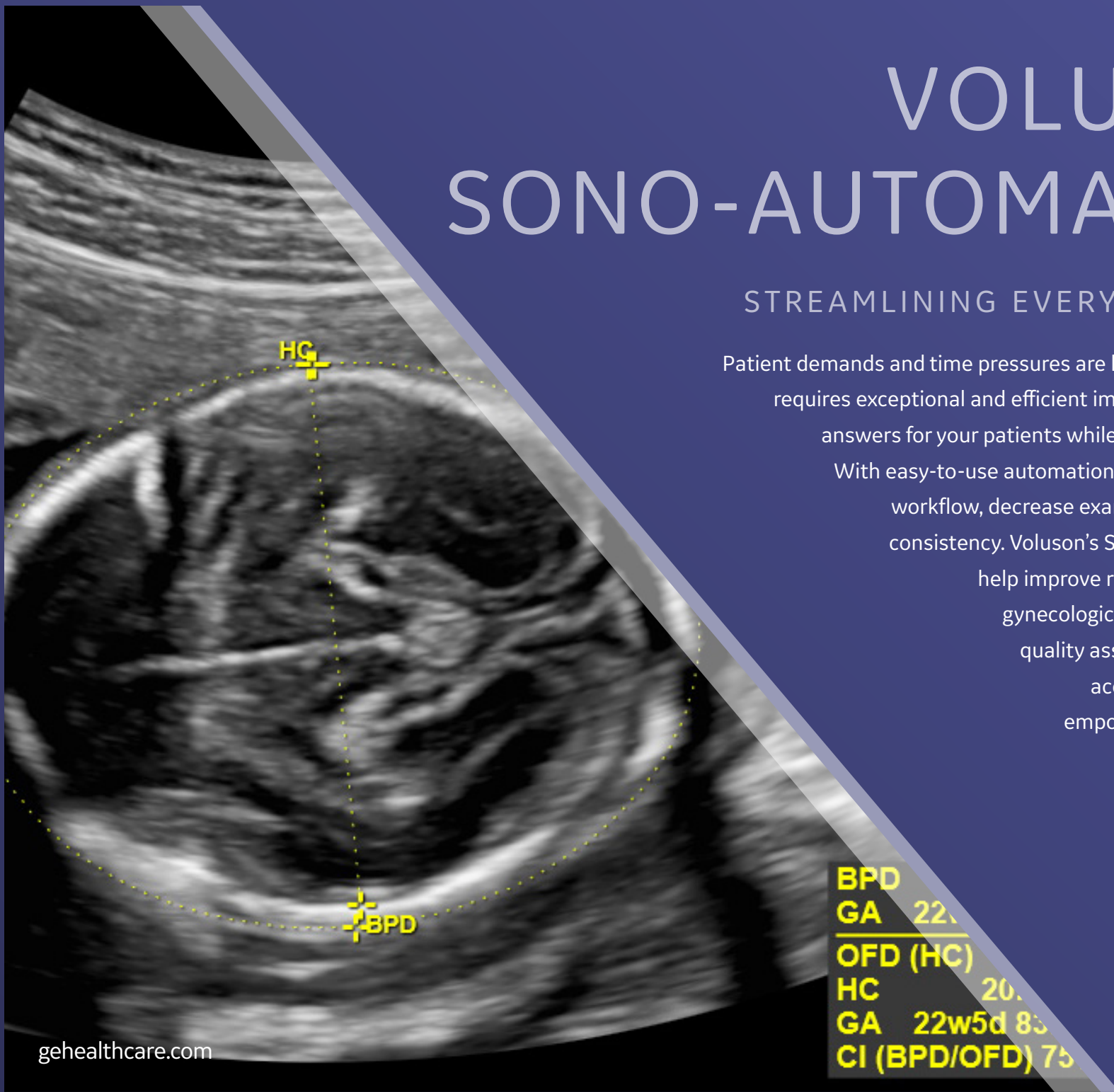


# VOLUSON™ SONO-AUTOMATION

PERFORMANCE  
SERIES

## STREAMLINING EVERYDAY WORKFLOW

Patient demands and time pressures are high. To succeed, your practice requires exceptional and efficient imaging – helping you to provide answers for your patients while managing your busy practice. With easy-to-use automation tools you can streamline your workflow, decrease exam complexity while increasing consistency. Voluson's Sono-automation technologies help improve reproducibility of obstetric and gynecologic exams while documenting for quality assurance purposes, helping you accomplish more each day while empowering you to deliver the best care to your patients.

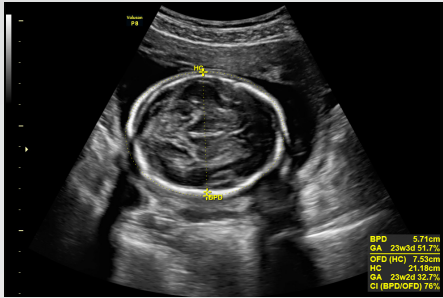


BPD  
GA 22w5d 8s  
OFD (HC)  
HC 20.5  
GA 22w5d 8s  
CI (BPD/OFD) 75

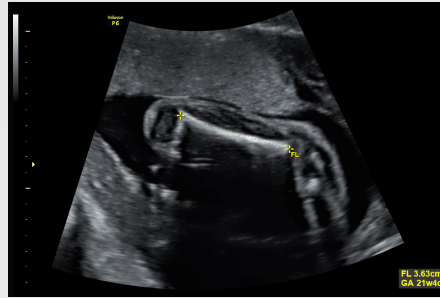


# GAIN CONSISTENCY WITH AUTOMATION

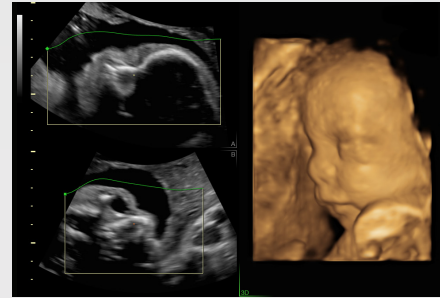
Easy-to-use tools to help reduce keystrokes and enhance patient care



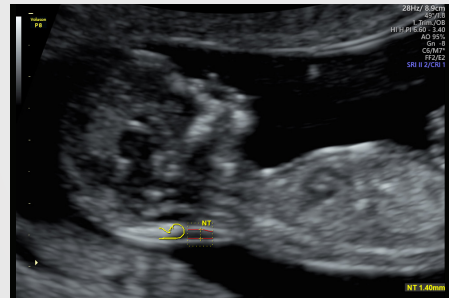
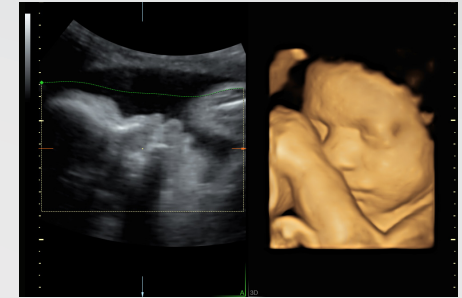
BPD and head circumference measurement



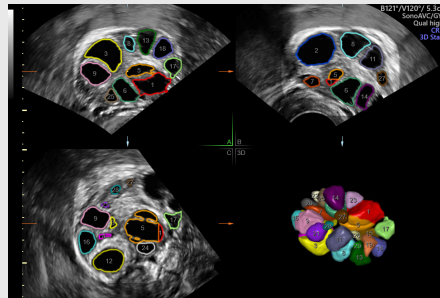
Femur length measurement



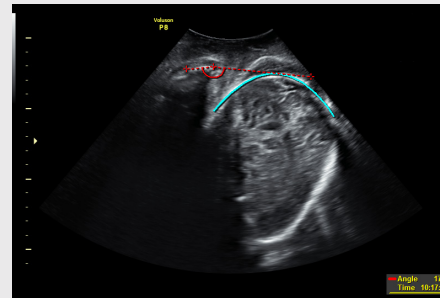
**SonoRenderlive** – Simplifies volume rendering by automating render-line placement in 3D and 4D imaging



**SonoNT™/SonoIT (Sonography-based Nuchal/Intracranial Translucency)\*** – Semi-automated, standardized measurements of nuchal and intracranial translucency



**SonoAVC<sup>follicle</sup> (Sonography-based Automated Volume Count follicle)** – Automatically calculates the number, dimensions, and volumes of hypoechoic structures in a volume sweep to help monitor patient follicles faster



**SonoL&D** – Confidently measure fetal head progression, while automatically documenting the labor progression



© 2018 General Electric Company – All rights reserved.

GE Healthcare reserves the right to make changes in specifications and features shown herein, or discontinue the product described at any time without notice or obligation. Contact your GE Healthcare representative for the most current information. GE, the GE Monogram, Voluson, SonoVCAD, SonoAVC, and SonoNT are trademarks of General Electric Company. GE Healthcare, a division of General Electric Company. GE Medical Systems, Inc., doing business as GE Healthcare.

March 2018  
JBXXXXXX

\*Voluson P8 only

Some technologies are not available on all Voluson Systems – please check with your local sales representative.