



GE Logiq **E**

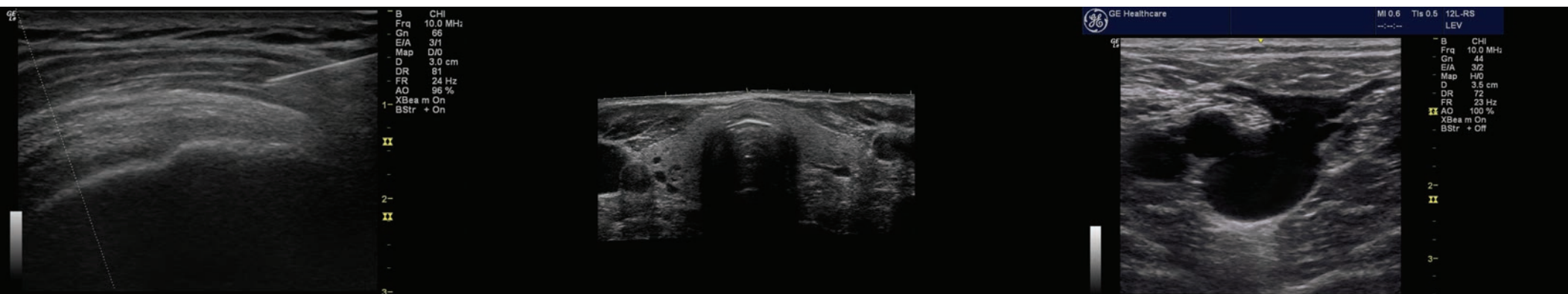
LOGIQ E

A battery-powered portable version of the Logiq line by GE with a good balance between features and price. The Logiq e replaced the older Logiq book with a more standard laptop style form factor.



APPLICATIONS

1. Vascular
2. OB/GYN
3. Abdominal
4. Musculoskeletal
5. Small parts
6. Urology
7. Emergency & Critical Care
8. Veterinary
9. Cardiac (BT11+)
10. Intraoperative (BT11+)
11. Nerve Block (BT11+)
12. Pediatric (BT11+)
13. Neonatal (BT11+)
14. Superficial (BT11+)
15. Interventional
16. Anesthesia & Pain Management



IMAGING MODES

1. B-Mode
2. B-Color
3. M-Mode
4. Color Doppler
5. Power Doppler
6. PW Doppler
7. CW Doppler (BT09+)
8. 3D
9. Anatomical M-mode (BT11+)
10. Color Flow Mode (BT11+)
11. Split Screen

FEATURES

1. 15" Color LCD screen
2. 1 probe port
3. Backlit keyboard
4. Integrated speakers
5. ATO (Automatic Tissue Optimization)
6. Tissue Doppler Imaging (BT11+)
7. Auto image optimization (for B mode, color flow and doppler)
8. ASO (Auto Spectrum Optimization) (BT11+)
9. Auto Clarity Suite (Auto Focus and Auto Frequency) (BT11+)
10. ACO [Adaptive Color Enhancement] (BT11+)
11. Raw data processing
12. On-board patient data management
13. Patient Follow-up Tool (BT12+)





FEATURES CONTINUED

14. ComfortScan
15. SmartScan
16. TruAccess
17. PDI Sensitivity (BT12+)
18. B-Steer + Needle Recognition (BT12+)
19. Crossbeam (BT09+)
20. Full M&A Calculation Package with
Real Time Auto Doppler Calculations (BT11+)
21. Vascular Calcs (BT11+)
22. Cardiac Calcs (BT11+)
23. OB Calcs and Tables (BT11+)
24. Fetal Trending (BT11+)
25. Multi Gestational Calcs (BT11+)
26. Musculoskeletal and Hip Dysplasia Calcs (BT11+)
27. Gynecological Calcs (BT11+)
28. Urological Calcs (BT11+)
29. Renal Calcs (BT11+)
30. Report Package (BT11+)
31. Q-Analysis (Color/PDI Quantification) (BT12+)
32. Advanced Image compare
33. Image archiving
34. EMR and PACS compatible
35. CINE loop
36. Loop storage
37. 80GB HD
38. CD-RW
39. External DVD R/W storage (BT11+)
40. 2 USB ports
41. Wireless LAN image transfer
42. Lithium-Ion Battery
43. Live Assist and InSite ExC



OPTIONS

1. DICOM
2. Wireless DICOM (BT09+)
3. DICOM 3.0 Connectivity (BT11+)
4. SRI (Speckle reduction imaging)
5. CrossXBeam (Spatial compounding)
6. 3D
7. Anatomical M-Mode (BT06-BT10)
8. Color M-Mode (BT06+)
9. B Steer Plus (BT09-BT11)
10. LOGIQView
11. USB ECG (AHA/IEC)
12. CW Doppler (BT06-BT08)
13. Auto IMT (BT11+)
14. eSmart trainer software (BT11+)
15. Stress Echo (BT11+)
16. TEE Probe Support (BT11+)
17. Touch Mode (BT11+)

PROBES

1. Convex probe 4C-RS (2 - 5.5 MHz)
2. Linear probe 8L-RS (4 - 12 MHz)
3. Cardiac Sector Probe 3S-RS (1.5 - 4 MHz)
4. Cardiac Sector Probe 6S-RS (2.5 - 7 MHz) (BT11+)
5. Cardiac Sector Probe 6Tc-RS (2.9 - 8 MHz) (BT11+)
6. Microconvex endocavity probe E8C-RS (4 - 10 MHz)
7. Microconvex pediatric / veterinary probe 8C-RS (4 - 10 MHz)
8. Linear Probe 8L-RS (4 - 12 MHz) (BT06+)
9. Linear Probe 9L-RS (3.33 - 10 MHz) (BT08+)
10. Linear probe 12L-RS (5 - 13 MHz)
11. Intraoperative linear probe i12L-RS (4 - 10 MHz)
12. Linear Probe L8-18i (4 - 14 MHz) (BT12+)
13. Intraoperative Probe L8-18i-RS (8 - 18 MHz) (BT12+)
14. Linear Probe 16L-RS (8 - 16 MHz) (BT09+)
15. Linear Probe L739-RS (5 - 10 MHz) (BT08+)
16. Linear Probe T739-RS (4 - 10 MHz) (BT08+)
17. Pencil Probe P2D-RS (2 MHz) (BT12+)

